



DENTAL LABORATORY EQUIPMENT

ZIRCONIUM SINTERING FURNACE EFZ 21

The furnace is managed and regulated by an electronic micro-processor control and has been designed and built to carry out the sintering, in dental laboratories, of products, such as bridges, crowns, caps, obtained by milling, by means of machining centers, of zirconium oxide (zirconia) in the semi-sintered state. The oven can operate with 20 programs, or heating cycles, which can be set and stored following the instructions of the zirconium oxide supplier. Max temperature 1650 °C. Up to 6 phases can be set for each program and 3 variables for each phase:

1. Temperature 2. Rate of rise 3. Stationing time

It can perform: slow cycles (rise rate 5 ° C / min: rise time 5 hours); fast cycles (rise speed 20 ° C / min: rise time 80 minutes). In addition, a switch-on delay of up to 100 hours can be set.

Input voltage: 230 V ac - 50/60 Hz.

Power: 2500W

Overall dimensions: 39 W x 25 D x 50 H cm.

Weight: 53 Kg.



EFZ 21

CERAMIC FURNACES

Ceramic furnaces designed and manufactured to ensure the best performance and reliability for each kind of ceramic.

With electronic vacuum control. With large LCD display. With quartz chamber. Max temperature 1200 °C. Self-calibration program. Manual calibration. Vacuum 759,5 mm/Hg. Input voltage 230 V ac 50/60 Hz.

Overall dimensions 40 W x 45 D x 53 H cm. Power (without pump) 1500 W. Weight 29 kg.

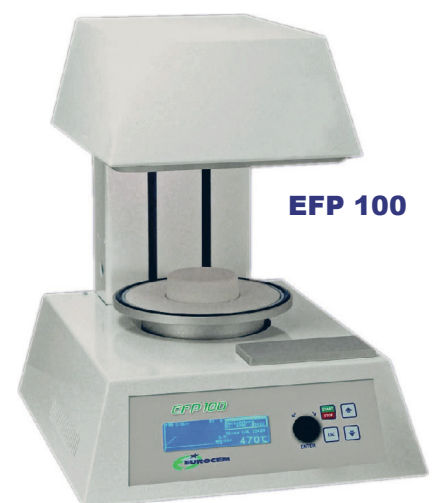
EFP 100 - Traditional ceramic furnace. With 100 programs each of them composed by 15 parameters that can be preset by the operator

EFP 100 P - Press-injection ceramic furnace. With 20 programs for press-injection each of them composed by 14 parameters that can be preset by the operator and 80 programs for traditional ceramic with 15 parameters that can be preset by the operator..

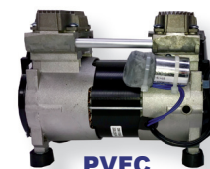
PVFC - Dry vacuum pump for ceramic furnaces.

Input voltage 230 V ac 50/60 Hz. Load 50 lt/min.

Power 200 W. Weight Kg 7,3.



EFP 100



PVFC

"EUROCEM s.r.l. reserves itself the right to modify its equipment whenever necessary without notice."

EUROCEM srl - Via Darwin, 20 - 20019 SETTIMO MILANESE (MI) Italy

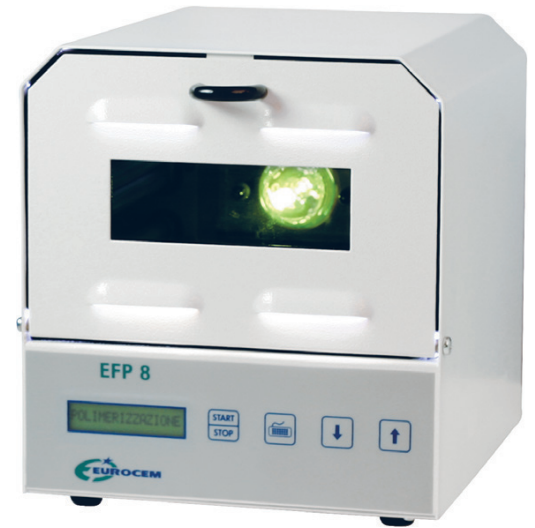
Tel. 02.3287849 / 02.33503261 - Fax 02.33503261

info@eurocemitalia.com - www.eurocemitalia.com

PHOTO-POLYMERIZATOR EFP 8

Device which allows photopolymerization of all active photo materials available on the market. It is equipped with 8 fluorescent lamps and one 150W halogen lamp, arranged around a rotating plate, which emits UVA rays and white light (photopolymerization range 320/550 nm). It also has a cooling fan so it is possible to work for long periods of time without overheating the materials.

During photopolymerization, the inside temperature does not exceed 50°C. Through an electronic microprocessor control it is possible to set a cycle either with or without the halogen lamp, to set photopolymerization time, to run or not run the final cooling cycle. Standard equipment: four 4* 9 W PLS910 lamps - four 4* 9 W PLS952 lamps - one 150 W halogen lamp - five support pins - one perforated Plexiglas plate. Input voltage 230 V ac 50/60 Hz. Overall dimensions: 22x28x25 cm. Power 320 W. Weight 10 kg.



PRE-HEATING OVEN ECF 3N SERIES

Pre-heating oven ECF 3N series with a new simple and functional electronic card which controls a three-stage cycle with temperatures, rising speed and standby times that may be preset by the operator according to his needs. LCD display. Possibility to preset the cooling phase. Timer for deferred ignition which may be set up to 99 hours and 59 minutes.

Final temperature which may be preset up to 1100 °C. Heating system by muffle with resistances on the four sides. Set for the connection to an extractor equipped with intake fan (AS) controlled by card with two options: automatic ignition of the fan when the heating system starts with temperature programming for stopping the fan or manually fan drive with timer programming for the duration of the intake time. Safety microswitch that cuts off the power to the resistance in any phase of the heating cycle when the door opens. Upper part made of stainless steel. Input voltage 230 V ac 50/60 Hz.



Model	Overall dimensions (WxDxH cm)	Inner chamber dimensions (WxDxH cm)	Cylinder capacity	Power (W)	Weight (kg)
ECF 3N1	30 x 38,5 x 44	12x16x9	6 3x or 3 6x	1.700	18,5
ECF 3N1 AS	30 x 51,5 x 59	12x16x9	6 3x or 3 6x	1.750	21
ECF 3N2	39 x 42 x 49,5	16,5x16x11	9 3x or 5 6x	2.400	30
ECF 3N2 AS	39 x 56 x 64,5	16,5x16x11	9 3x or 5 6x	2.450	32,5
ECF 3N3	39 x 52 x 49,5	16,5x26x11	8 6x or 6 9x	2.850	35
ECF 3N3 AS	39 x 66 x 64,5	16,5x26x11	8 6x or 6 9x	2.900	37,5

PRE-HEATING OVEN ECF 4 SERIES

Pre-heating oven ECF 4 series with an electronic card for storing 10 cycles, each of them includes 4 stages with temperatures, rising speed and standby times that may be preset by the operator according to his needs. Possibility to preset an 8 stage cycle and a cooling phase. Timer for deferred weekly ignition. Final temperature which may be preset up to 1100 °C. Heating system by muffle with resistances on the four sides. Set for the connection to an extractor equipped with intake fan (AS) controlled by card with two options: automatic ignition of the fan when the heating system starts with temperature programming for stopping the fan or manually fan drive with timer programming for the duration of the intake time. Set for the connection to the hood with temperature programming for stopping the hood. Visualization of the cycle time period. Safety microswitch that cuts off the power to the resistance in any phase of the heating cycle when the door opens.

Upper part made of stainless steel.

Input voltage 230 V ac 50/60 Hz.

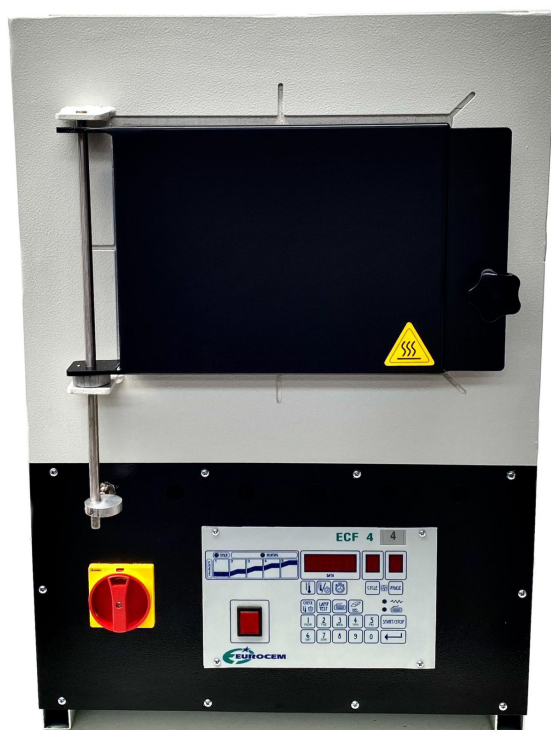


Model	Overall dimensions (WxDxH cm)	Inner chamber dimensions (WxDxH cm)	Cylinder capacity	Power (W)	Weight (kg)
ECF 41	30 x 38,5 x 44	12x16x9	6 3x or 3 6x	1.700	18,5
ECF 41 AS	30 x 51,5 x 59	12x16x9	6 3x or 3 6x	1.750	21
ECF 42	39 x 42 x 49,5	16,5x16x11	9 3x or 5 6x	2.400	30
ECF 42 AS	39 x 56 x 64,5	16,5x16x11	9 3x or 5 6x	2.450	32,5
ECF 43	39 x 52 x 49,5	16,5x26x11	8 6x or 6 9x	2.850	35
ECF 43 AS	39 x 66 x 64,5	16,5x26x11	8 6x or 6 9x	2.900	37,5

PRE-HEATING OVEN FOR SKELETAL PROSTHESES ECF 44

Pre-heating oven for skeletal prostheses with an electronic card for storing 10 cycles, each of them includes 4 stages with temperatures, rising speed and standby times that may be preset by the operator according to his needs. Possibility to preset an 8 stage cycle and a cooling phase. Timer for deferred weekly ignition. Final temperature which may be preset up to 1100 °C. Heating system by muffle with resistances on two sides and ceiling. Set for the connection to an extractor equipped with intake fan, controlled by card with two options: automatic ignition of the fan when the heating system starts with temperature programming for stopping the fan or manually fan drive with timer programming for the duration of the intake time. Visualization of the cycle time period. Safety microswitch that cuts off the power to the resistance in any phase of the heating cycle when the door opens.

Input voltage 230 V ac 50/60 hz. Overall dimensions 53W x 70D x 70H cm. Inner chamber dimensions 24W x 32D x 18H cm. Capacity 12 9x. Power 4000 W. Weight 90 kg.



INDUCTION CASTING MACHINE ECK 80

Low frequency induction casting for the melting of all the dental alloys. It is endowed with a latest generation generator which allows to obtain low melting times and to control the melting itself in order to not overheat any type of alloy both the shoddy and the precious ones. The casting of the metal into the cylinder is created by the centrifugal force and the rotation movement of the arm before the melting is automatic, rapid and clear. The arm is endowed with a fixed positions counterweight. It uses four Degussa cylinders (1X, 3X, 6X, 9X) but you can use any type of cylinder, also the free expansion ones. The machine doesn't have to be connected to the hydro-net because it is endowed with a closed-circuit forced temperature reduction. When you install the machine remember to fill up the tank with distillate water. (15 liters).

Input voltage 230 V ac, 50/60 Hz.

Power 2500 W.

Overall dimensions: 60W X 51D X 91H. Weight: kg.83



CENTRIFUGAL MACHINE FOR BLOWPIPE CASTING

ECK 60B

For blowpipe casting. Digital motor rotation time adjustment (range set by the operator: 15/60 seconds). Digital initial force adjustment (range set by operator: 5 steps with sequential adjustment). Device to detect correct position of the arms. Handy systems to quickly balance arms and centre the cylinder. Mechanical door lock sets in when cycle starts. Switch to turn off motor when cycle is running. Safety microswitch. Input voltage 230 V ac 50 Hz. Power 1400 W.

ECK 60 - Model without base

Overall dimensions 60,5W x 55D x 32H cm.

Weight 39 kg.

ECK 60B - Model with base.

Overall dimensions 60,5 W x 55 D x 93 H cm.

Weight 57 kg.



ECK 60



DIRECT LOADING STEAM GENERATORS

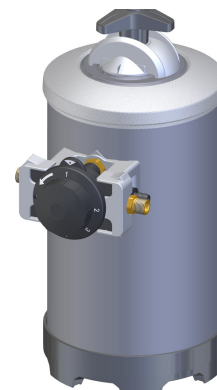
EGV 28 AI - Steam generator directly connected to the water works or outside tank. 6 bars working pressure with visualization of the pressure inside the boiler on the pressure gauge. Water and steam function through gun with flow regulation. Low tension water and steam outlet control on the gun. Safety devices: double pressure switch and safety valve. Control for minimum and maximum water level inside the boiler with heater deactivation and pilot light indicating lower water level in the boiler. Available with or without water softener. Stainless steel boiler (4 l capacity). Stainless steel structure. Fixing to a wall. Overall dimensions. 46W x 32D x 35,5H cm. Weight 15 kg. Input voltage 230 V ac 50/60 Hz. Power 2200 W.



EGV 28 PN - Steam generator directly connected to the water works or outside tank. Working pressure from 2 to 8 bar preset by the operator through an electronic card with visualization on the display of the pressure inside the boiler. Steam function through a fixed nozzle. Water, steam and water/steam function through gun with flow regulation. Low tension pedal control. Safety devices: manual reset pressure switch and safety valve. Control for minimum and maximum water level inside the boiler. Control for pump perfect running with heater deactivation and visualization on the display. Available with or without water softener. Stainless steel boiler (4 l capacity). Stainless steel structure. Tap for purified water intake. Fixing to a wall. Overall dimensions. 52W x 31D x 36H cm. Weight 15 kg. Input voltage 230 V ac 50/60 Hz. Power 2200 W.



AD - Water softener for steam generators. Overall dimension cm 28 W x 19 D x 40 H. Weight 8 Kg



MANUAL LOADING STEAM GENERATORS

EGV14 - Manual loading steam generator. 4 bar working pressure with visualization of the pressure inside the boiler on the pressure gauge. Steam function through gun. Low tension steam outlet control on the gun. Safety devices: double pressure switch and safety valve. Control minimum water level inside the boiler with heater deactivation and pilot light indicating lower water level in the boiler. Stainless steel boiler (4 l capacity - empty tank holds about 3,3 liters - refills about 2,2 liters).

Overall dimensions: cm W 25 x D 48 x H 40

Weight: kg 15.

Input voltage: 230 V ac 50/60 Hz - Power 2200 W

EGV18 AI - Manual loading steam generator. 6 bar working pressure with visualization of the pressure inside the boiler on the pressure gauge. Steam function through gun with flow regulation. Low tension steam outlet control on the gun. Safety devices: double pressure switch and safety valve. Control for minimum water level inside the boiler with heater deactivation and pilot light indicating lower water level in the boiler. Stainless steel boiler (4 l capacity - empty tank holds about 3,3 liters - refills about 2,2 liters). Stainless steel structure.

Fixing to a wall.

Overall dimensions. 46W x 32D x 37,5H cm. Weight 15 kg.

Input voltage 230 V ac 50/60 Hz. Power 2200 W.



POLISHING MACHINE EPM 1

Bench model, compact and noiseless.
2 speeds (1400/2800 rpm) Available with or without splash guards. Input voltage 230 V ac 50 Hz.

Overall dimensions 34 W x 20 D x 25 H cm.

Power: 500 W.

Weight: 12 kg.



EXTRACTOR HOOD ECA 550

The ECA unit was designed and built to suck up the particles produced during the polishing and processing phase with pumice.

Overall dimensions 75 W x 55 D x 60 H cm.

Input voltage 220V 50/60 Hz.

Power 2000 W

Sound level: 67.5 dB (A)

Weight: 60 Kg.



MODEL TRIMMERS

EMT 1400 - Water model trimmer -

With solenoid valve for water. With bakelitic disc.
Speed 2800 rpm. Overall dimensions 30 W x 40 D x 30 H cm.
Working table high 15 cm. Weight 17 kg.
Input voltage 230 V ac 50 Hz. Power 1000 W.

EMT 2800 - Dry model trimmer -

Preset for connecting the outside aspirator.
With diamond disc.
Speed 2800 rpm. Overall dimensions 30 W x 40 D x 30 H cm.
Working table high 15 cm. Weight 17 kg.
Input voltage 230 V ac 50 Hz. Power 1000 W.



ORTHODONTIC MODEL TRIMMER EMT 3800

The unit has two motors that act either simultaneously or independently by means of two switches. It is equipped with a solenoid valve and on its lower side there two faucets to adjust separately the water flux on the two wheels. It is also supplied with a goniometer and a graduate
Overall dimensions 53W x 42D x 40H.
Input voltage 230 v ac 50 Hz.
Power 450 W
Weight: 37 kg.



PLASTER DRILLING DEVICE EFG 130

Drilling device for plaster models, Plexiglas or PVC bases to drive conical pins into the pullout stump technique. Equipped with aiming laser for a fine and reliable drilling. Drill depth setting through a knob on the device front.
Overall dimensions: 25W x 26D x 40H cm.
Weight: 15 kg.
Input voltage 230 V ac 50 Hz. Power 150 W. Speed 2800 rpm.
Drill diameter 3 mm

MIXERS FOR PLASTERS AND INVESTMENTS

ECM 400 - Mixer for plasters and investments. With integrated vacuum pump (max vacuum -870 mbar). Adjustment of the mixing time by digital timer. Supplied with the base to place the equipment on the bench and with the support to fix it to the wall. Complete with 500 cc bowl (available on request 200 cc bowl and 1000 cc bowl).

Speed 400 rpm. Input voltage 230 V ac 50 Hz.

Power 140 W.

Overall dimensions 18 W x 24 D x 30 H cm. (56 H with base).

Weight Kg. 10 (Kg. 12 with base)



ECM 500 P - For plasters and investments. Possibility to run the whole mixing and pouring cycle in partial or total vacuum. Vacuum release adjustment. Supplied with internal vacuum pump (2 m³/h - vacuum greater than 70 cm/Hg). Digital adjustment of the mixing time (range which may be preset by the operator 5/120 seconds). Complete with vibrator at digital adjustable intensity. Complete with investment bowl with 500 g capacity (available on request 500 g plaster bowl). Speed 230 rpm. Input voltage 230 V ac 50 Hz. Power 400 W. Overall dimensions 31 W x 35 D x 61 H cm. Weight 26 Kg.

SANDERS

ESB MINI - One sand version. Possibility of sanding with aluminum oxide or glass microspheres from 25 µm to 250 µm. When placing the order, the operator can select the modules to be installed according to his needs among three different sizes (25/50 µm nozzle d. 0,5 - 50/110 µm nozzle d. 0,8 - 110/250 µm nozzle d. 1,3). Pedal control. Pressure regulator and pressure gauge. Weight: Overall dimension: 16W x 16D x 35H cm

Weight: 3 Kg.

ESB 1 - One sand version. Possibility of sanding with aluminum oxide and/or glass microspheres from 25 µm to 250 µm. When placing the order, the operator can select the modules to be installed according to his needs among three different sizes (25/50 µm nozzle d. 0,5 - 50/100 µm nozzle d. 0,8 - 110/250 µm nozzle d. 1,3). Preset for connecting the outside aspirator. Pedal control. Perfect visibility and excellent lighting. Pressure regulator and pressure gauge. Door with knob for a perfect closure of the sandblasting box. Air filter. With gloves. As standard outfit one 50/110 µm module is installed.

Input voltage 230 V ac 50/60 Hz. Power 9 W. Overall dimensions 39W x 43D x 43H cm. Weight 12 kg.

ESB 1 PLUS - As ESB1 but with a second recycling handle with d. 3 mm nozzle for roughing. Single sand selector place inside the sandblasting box

ESB 2 - Two sand version. Possibility of sanding with aluminum oxide and/or glass microspheres from 25 µm to 250 µm. When placing the order, the operator can select the modules to be installed according to his needs among three different sizes (25/50 µm nozzle d. 0,5 - 50/100 µm nozzle d. 0,8 - 110/250 µm nozzle d. 1,3). Preset for connecting the outside aspirator. Pedal control. Perfect visibility and excellent lighting. Single sand selector placed inside the sandblasting box. Pressure regulator and pressure gauge. Door with knob for a perfect closure of the sandblasting box. Air filter. With gloves. As standard outfit, one 50/100 µm module and one 110/250 µm module are installed. Input voltage 230 V ac 50/60 Hz. Power 9 W. Overall dimensions 39W x 43D x 43H cm. Weight 13 kg.

ESB 2 PLUS - As ESB 2 but with a third recycling handle with d. 3 mm nozzle for roughing.

ESB 3 - Three sand version. Possibility of sanding with aluminum oxide and/or glass microspheres from 25 µm to 250 µm. When placing the order, the operator can select the modules to be installed according to his needs among three different sizes (25/50 µm nozzle d. 0,5 - 50/100 µm nozzle d. 0,8 - 110/250 µm nozzle d. 1,3). Preset for connecting the outside aspirator. Pedal control. Perfect visibility and excellent lighting. Single sand selector placed inside the sandblasting box. Pressure regulator and pressure gauge for each cylinder. Door with knob for a perfect closure of the sandblasting box. Air filter. With gloves. As standard outfit, one 25/50 µm module, one 50/100 µm module and one 110/250 µm module are installed.

Input voltage 230 V ac 50/60 Hz. Power 9 W. Overall dimensions 47W x 52D x 43H cm. Weight 16 kg.

ESB 3 PLUS - As ESB 3 but with a fourth recycling handle with d. 3 mm nozzle for roughing.



ESB MINI

ESB2

ESB3



SANDER FOR SKELETAL PROSTHESES

ESB 4 - For skeletal prostheses. With recycling. With d.4 mm fixed nozzle. Preset for connecting the outside aspirator. Pedal control. Perfect visibility and excellent lighting. Pressure regulator and pressure gauge. Door with knob for a perfect closure of the sandblasting box. Air filter. With gloves.

Input voltage 230 V ac 50/60 Hz. Power 9 W.

Overall dimensions 35W x 41D x 54H cm. Weight 15 kg.

ASPIRATORS

Aspirator ECS 1 - For sanders. Small dimensions for an easy positioning inside the dental laboratory. Special filtering system for extra fine sands. High power by-pass motor. Input voltage 230 V ac 50/60 Hz. Power 1000 W. Overall dimensions 41 Ø x 57H cm. Weight 8 kg. Sound level 60 Db(A)

Aspirator ECS 2 - For model trimmer.
As ECS 1 with special filtering system for plaster



VIBRATORS

Vibrators with power regulator. With rubber feet which allow a perfect adhesion to any surface. With rubber surface easily removable for a quick cleaning.

EV 100 - Working surface 13D x 15W cm.
Overall dimensions 16,5 W x 16,5 D x 8,5 H cm.
Input voltage 230 V ac 50/60 Hz. Power 100 W.
Weight 3,5 kg.



EV 200 - Working surface 13D x 22W cm.
Overall dimensions 16,5 W x 24 D x 10 H cm.
Input voltage 230 V ac 50/60 Hz. Power 200 W.
Weight 5 kg.



EV 300 - Working surface 22,5D x 33,5W cm. Overall dimensions 24 W x 35 D x 12 H cm.
Input voltage 230 V ac 50/60 Hz. Power 300 W.
Weight 9 kg



EV 200/EV 300 accessories

Vibrating handle for external support. Knob for vibration enlargement

SANDS

Aluminum oxide

Available sizes: 50/75/90/110/125/150/180/210/250 μm

4 Kg tank or 10 Kg tank

Glass microspheres

Available sizes: 40/70 μm - 70/110 μm - 90/150 μm - 150/250 μm

3 Kg tank or 8 Kg tank



WATER POLYMERIZER

ECP 12 - For 12/15 muffles (tank dimensions 30W X 33D X 26H cm) With electronic card for programming 2 phases. (1 st phase: pre-heating – 2 nd phase: boiling). Pre-heating and boiling times, programmable by electronic card. Rising speed preset by the operator according to his needs. Timer for deferred ignition, controllable by electronic card. Made of stainless steel. Input voltage 230 V ac 50/60 Hz. Power 1200 W. Overall dimensions 35 W X 44 D X 42H cm. Weight 12 kg.



ECP 12

ECP 4 - For 4 muffles (tank dimensions 17W x 32D x 25H cm). With electronic card for programming 2 phases (1st phase: pre-heating - 2nd phase: boiling). Pre-heating and boiling times, programmable by electronic card. Rising speed preset by the operator according to his needs. Timer for deferred ignition, controllable by electronic card. Made of stainless steel. Input voltage 230 V ac 50/60 Hz. Power 1200 W. Overall dimensions 18,5W x 43,5D x 42H cm. Weight 8 kg.



ECP 4

HYDRAULIC PRESS EPI 1

Hydraulic press can clamp 3 muffles with max pressure 400 bar (15000 kg). The hydraulic circuit is completely sealed and the press doesn't require any maintenance. Working pressure 200 bar. Max pressure 400 bar. Working force 75000 N. Max force 150000 N. Max light between plates 23,5 cm. Quantity of muffles: 1/2/3. Overall dimensions 20W x 19D x 48H cm. Weight 20 kg



MUFFLES AND CLAMPS

MF4P - 4 parts muffle

SP2M - Press clamp for 2 muffles

S1M - 1 muffle clamp

S2M - 2 muffle clamp

MFAM - Autblock muffle





DENTAL LABORATORY EQUIPMENT

EUROCEM SRL

Via Darwin, 20 - 20019 SETTIMO MILANESE (MI) Italy

Tel. 02.3287849 / 02.33503261 - Fax 02.33503261

info@eurocemitalia.com - www. eurocemitalia.com

"EUROCEM s.r.l. reserves itself the right to modify its equipment whenever necessary without notice."